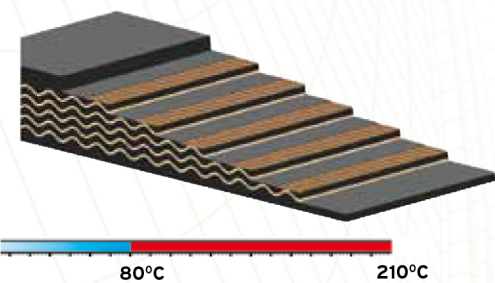


Hot transported material can very easily damage the conveyor belt. To prevent possible damages, Savatech has developed three types of belts that correspond to different temperature conditions.



With regard to the application and heat resistance properties, three types of conveyor belts are available:

- **T1 type** - *temperature of material up to 125°C
 - **T2 type** - *temperature of material up to 150°C
 - **T3 type** - *temperature of material up to 210°C
- *depends on the ambient temperature, grain size and contact duration

Short time peaks in temperature of material possible up to 400°C. Please contact us for further details.

Heat resistant conveyor belts are suitable for:

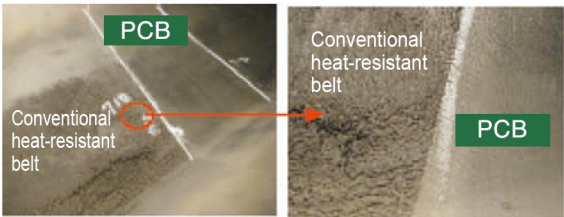
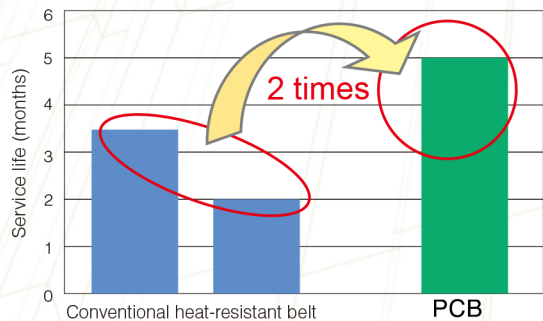
- cement plants
- heating stations, power stations, garbage incineration plants
- chemical industry
- steelworks, metal foundries, metal processing industry
- hot asphalt transportation

TYPICAL HEAT RESISTANT BELTS									
BELT TYPE	WIDTH								
	500	650	800	1000	1200	1300	1400	1600	1800
EP 400/3 4/2 T1	●	●	●	●	●		●	●	●
EP 400/3 4/2 T2	●	●	●	●		●		●	●
EP 400/3 4/2 T3	●	●	●	●		●		●	

Other constructions and widths on request.

Evaluation data [1]: Crack life evaluation

● Service life comparison on a foundry sand conveyor line (Belt surface temperature 260°C max.)



Evaluation data [2]: Wear life evaluation

● Remaining cover rubber thickness on a sintered ore conveyor line

