



STEEL CORD ELEVATOR BELT AND ACCESSORIES

Pro Belt (Qingdao) Rubber Co., Ltd

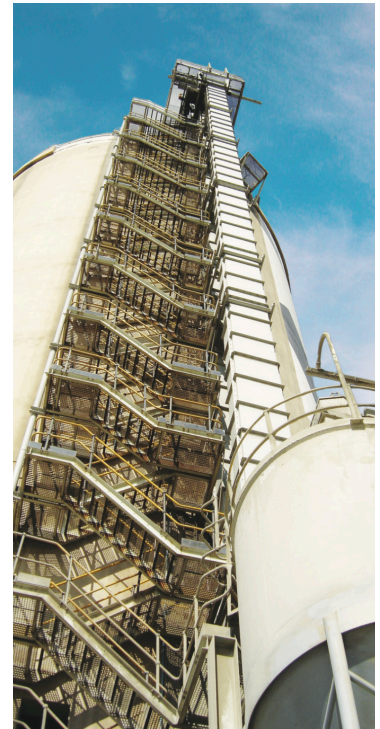
www.pro-cb.com

pcb@pro-cb.com

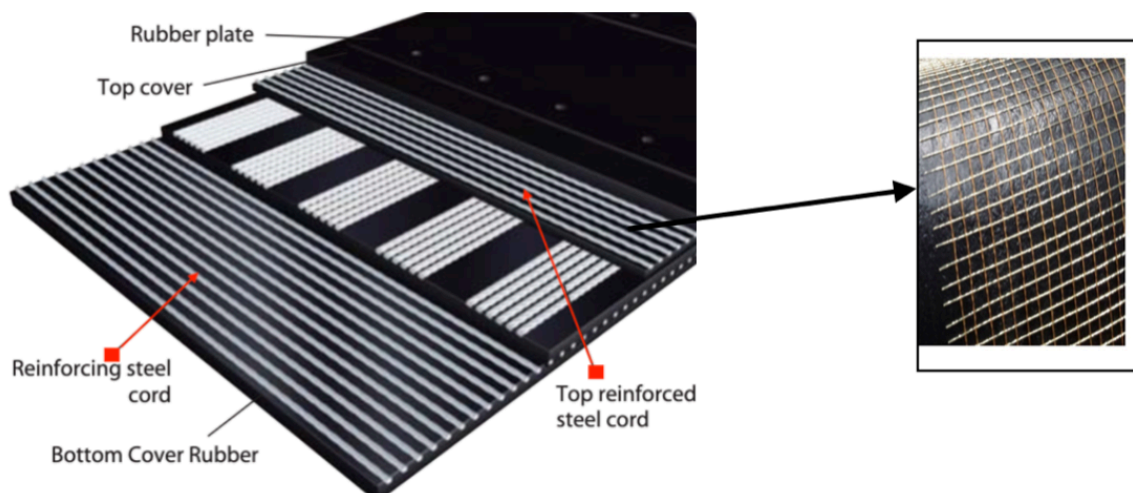
Steel Cord Belt

With our quality, PCB Bucket Elevators Belt can be used vertical transport of any kind of bulk material under severe operating conditions and in continuous operation.

- Limestone
- Aggregates
- Clinker
- Slag
- Cement
- Gypsum
- Coal
- Ores
- Fly ash
- Raw meal
- others

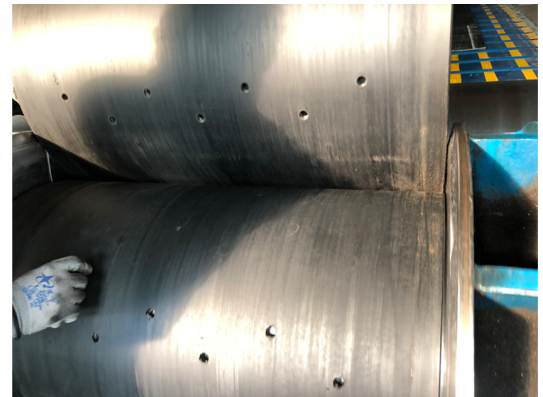
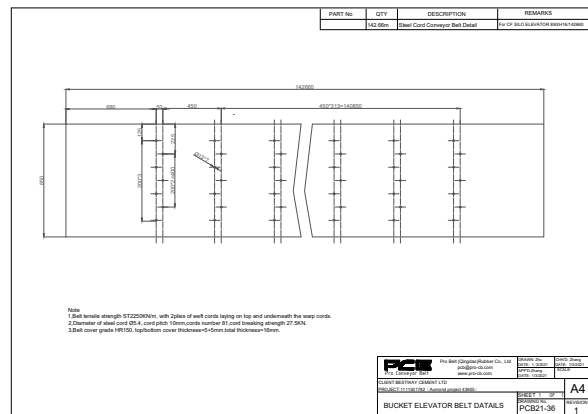


The industry proven belt design consists of a steel cord carcass in a solid rubber mass which eliminates the concern of the belt delaminating. The steel cord belt is designed to have low elongation yet have elasticity in the length, as well as cross cords in the width. The built-in elasticity allows operation over a crowned head pulley while the cross weft construction provides



Manufacturing standard: DIN 22102, DIN 22131 and ISO standard.

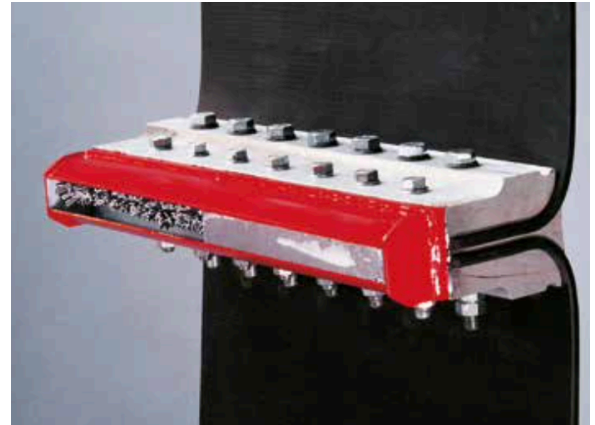
PCB AutoCAD drawing provided with order with exact elevator bucket and belt fastener bolt hole pattern.



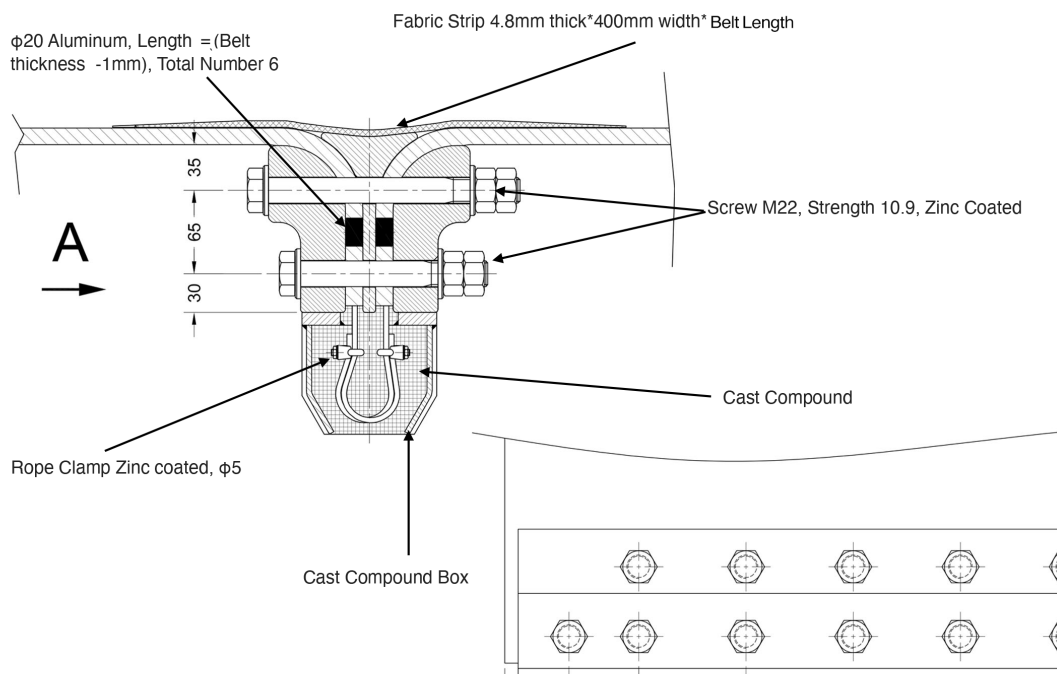
Clamping Connection

Belt splicing is made by clamping the steel ropes in a casting compound box. The rope ends are connected by means of clamps and then cast with a special casting compound. This ensures reliable splicing with no chance for the belt ends to escape.

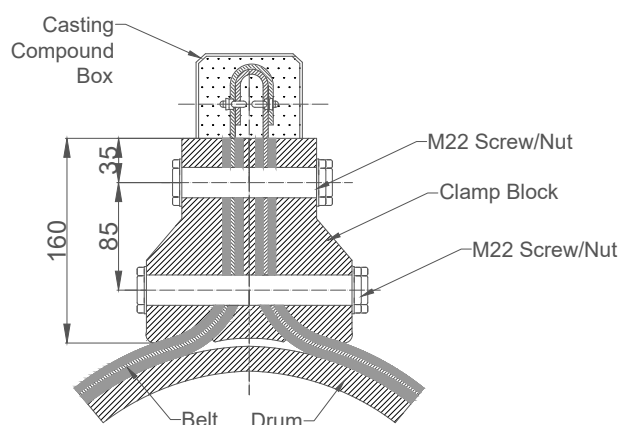
The clamping is made with high strength aluminum alloy. There are two dimension/construction options for clients.



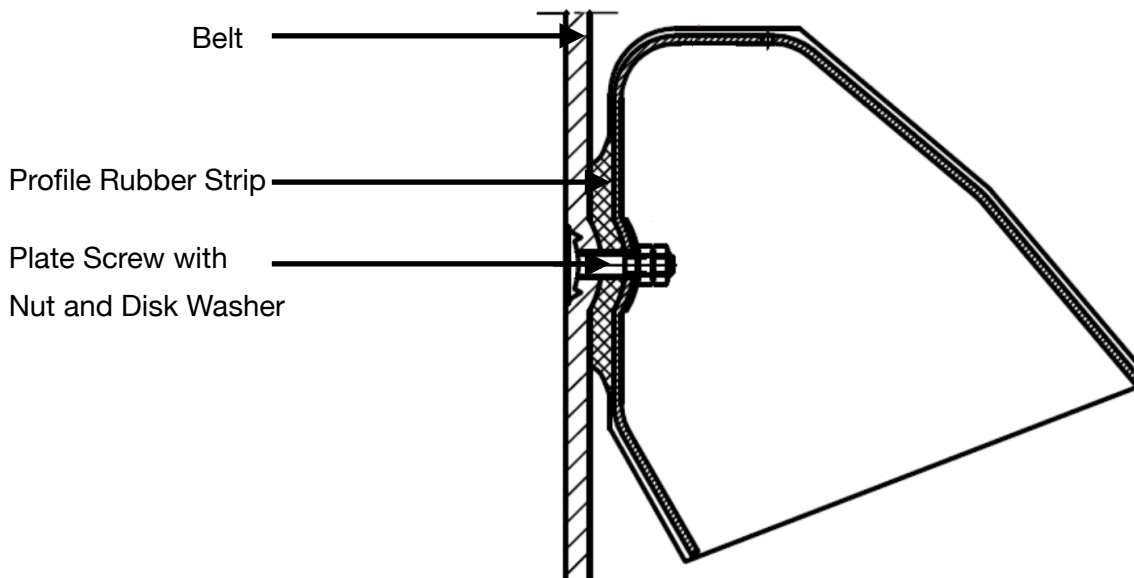
Type A



Type B

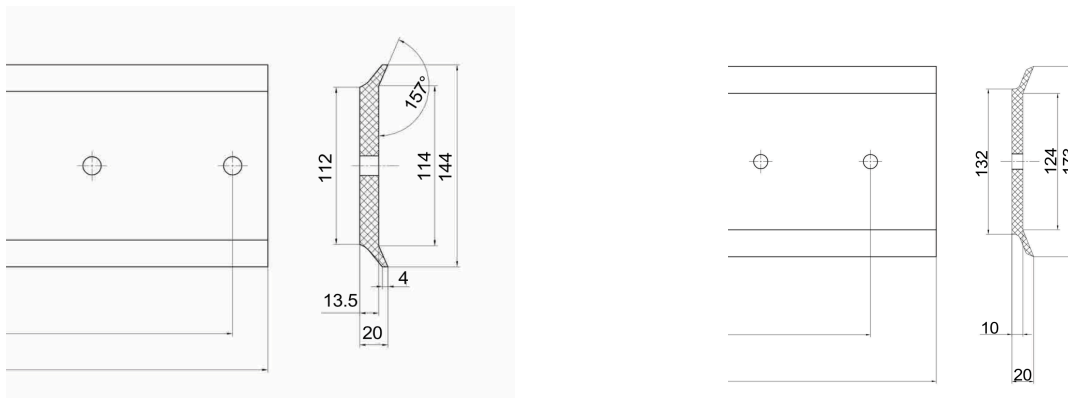


Rubber Strip and Plate Screw



- **Rubber Strip and Plate Screw**

The rubber strip material is EPDM or Synthesis depend on the material transported. The dimension/holes/shape are customer designed.



- **Plate Screw**

The plate screw is designed and treated with high tension steel. The length/dimension is designed according the client request.

