



Rubber Mat



PCB
Pro Conveyor Belt



Industrial Rubber Mat



SBR Rubber Mat

Thickness: 1-50mm, Width: 0.6-2m, Length:1-50m

Good resistant of abrasion, high temperature, aging. It is used for gasket, flooring etc.



CR Rubber Mat

Thickness: 1-50mm, Width: 0.6-2m, Length:1-50m

CR has good resistance to temperature changes, adverse weather conditions, acid/alkali and fire retardation. It can be used to protect environment that are in contact with oils and chemical products.



EPDM Rubber Mat

Thickness: 1-50mm, Width: 0.6-2m, Length:1-50m

EPDM has excellent resistance of ozone, acid, hot/cold water and alkaline. Long service life in extreme environmental conditions and sustained flexibility. It can be used in radiator, garden, electrical insulation and many other applications.



NBR Rubber Mat

Thickness: 1-50mm, Width: 0.6-2m, Length:1-50m

NBR provide good resistance to most type of oil such as mineral, animal and vegetable oil, normal fuel like gasoline, diesel and light heating oil, mixture of alcohol and gasoline. The temperature range is -40 to +100°C, for brief period it is up to 120°C. It can be used in gaskets and other products in which oil resistance is required.



Fabric Impression Rubber Mat

Thickness: 1.5-50mm, Width: 0.6-2m, Length:1-50m

The mat surface is convenient for paste, and has good toughness and flexibility, more tradimensional, also provide shock absorption and skid resistance.

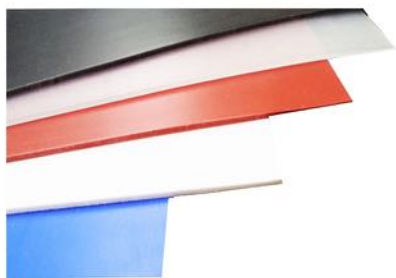


Special Industrial Rubber Mat

Silcon Rubber Mat

Thickness: 1-30mm, Width: 0.6-2m, Length:1-20m

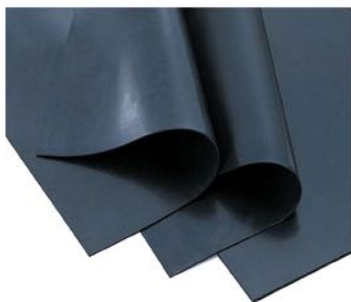
It has good resistance of high temperature, no-toxic and tasteless. It can be used in chemical, electrical, fitness and other industries with different temperature conditions. Temperature range is -60 to 200°C



Fire Resistance Rubber Mat

Thickness: 1-50mm, Width: 0.6-2m, Length:1-20m

Excellent flame retardation. Mainly be used in fire risky area.



Sponge Rubber Mat

Thickness: 2-50mm, Width: 1m, Length:1-20m

High fleibility and excellent shock absorption. Can be used for shock proof, gasket etc.



Composite Anti-static Rubber Mat

Thickness: 3-8mm, Width: 0.6-2m, Length:1-20m

Excellent anti-static properties. Mainly used in the electronic filed. Also can be used on the working table.



Food Grade Rubber Mat

Thickness: 1-20mm, Width: 0.6-2m, Length:1-20m

Mainly used in foodstuff and medical industry.





Special Industrial Rubber Mat



Smooth Insulation Rubber Mat

Thickness: 3-50mm, Width: 0.6-2m, Length:1-20m

It has been certified by the EU certification. Can be used as workbench and flooring in the power distribution rooms.



Pattern Insulation Rubber Mat

Thickness: 3.5-8mm, Width: 0.6-1.5m, Length:1-20m

It has been certified by the EU certification. Can be used as workbench and flooring in the power distribution rooms.



Sandwich Scraper Rubber Mat

Thickness: 12-50mm, Width: 1.4m, Length:10m

Top and bottom cover rubber hardness are $65\pm5^\circ$. Inner rubber hardness is $45\pm5^\circ$. This structure can provide both flexibility and abrasion when be used.



Anti-Slip Rubber Mat



Round Button Rubber Mat

Thickness: 3-8mm, Width: 0.6-1.5m, Length:1-20m

Excellent resistance of water and slippery. Good looking and protective functions. Used for house, gyms etc.



Checker Rubber Mat

Thickness: 3-8mm, Width: 0.6-1.5m, Length:1-20m

Excellent resistance of water and slippery. Good looking and protective functions. Used for house, gyms etc.



Horse Rubber Mat

Thickness: 3-8mm, Width: 0.6-1.5m, Length:1-20m

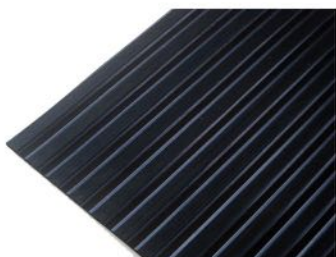
Excellent resistance of water and slippery. Good looking and protective functions. Used for house, gyms etc.



Braid Pattern Rubber Mat

Thickness: 3-8mm, Width: 0.6-1.5m, Length:1-20m

Excellent resistance of water and slippery. Good looking and protective functions. Used for house, gyms etc.



Wide Ribbed Rubber Mat

Thickness: 6-12mm, Width: 0.6-2m, Length:1-20m

Excellent resistance of water and slippery. Good looking and protective functions. Used for house, gyms etc.



Anti-Slip Rubber Mat



Composite Ribbed Rubber Mat

Thickness: 3-8mm, Width: 0.6-1.5m, Length:1-20m

Excellent resistance of water and slippery. Good looking and protective functions. Used for house, gyms etc.



Fine Ribbed Rubber Mat

Thickness: 3-8mm, Width: 0.6-2m, Length:1-20m

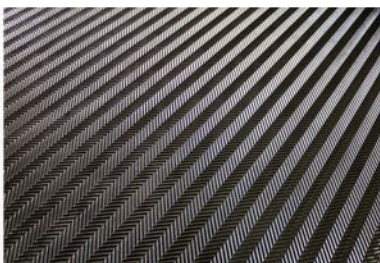
Excellent resistance of water and slippery. Good looking and protective functions. Used for house, gyms etc.



Willow Rubber Mat

Thickness: 3-8mm, Width: 0.6-1.5m, Length:1-20m

Excellent resistance of water and slippery. Good looking and protective functions. Used for house, gyms etc.



Fish Bone Rubber Mat

Thickness: 3.5-8mm, Width: 0.6-1.5m, Length:1-20m

Excellent resistance of water and slippery. Good looking and protective functions. Used for house, gyms etc.



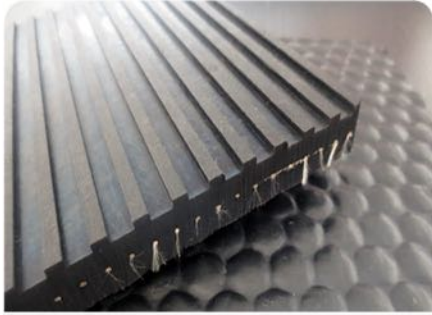
Small Squared Rubber Mat

Thickness: 8-12mm, Width: 0.6-1.5m, Length:1-20m

Excellent resistance of water and slippery. Good looking and protective functions. Used for house, gyms etc.



Livestock Rubber Mat



Hammer Cow Rubber Mat

Thickness: 8-20mm, Width: 1-2m, Length:1-50m

It belong to the agricultural rubber products and widely used in farms.



Cow Rubber Mat

Thickness: 19mm, Width: 1.83m, Length:1-50m

It belong to the agricultural rubber products and widely used in farms.



Diamond Rubber Mat

Thickness: 8-15mm, Width: 1-2m, Length:1-30m

It can be used in mines generally, insulating layer inside of machines or outside to resist abrasion. Also can be used in farms.



M Pattern Cow Rubber Mat

Thickness: 8-12mm, Width: 0.6,1.2,1.8m, Length:1-50m

It belong to the agricultural rubber products and widely used in farms.



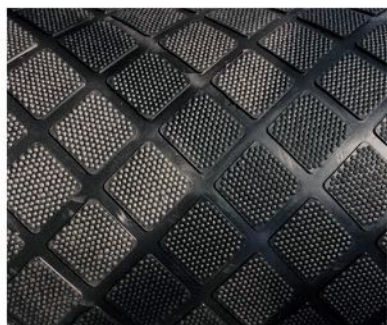
Livestock Rubber Mat



Bilateral Cow Bed Rubber Mat

Thickness: 4mm, Width: 2m, Length:10-50m

It belong to the agricultural rubber products and widely used in farms.



Diamond with Hammer Top Cow Rubber Mat

Thickness: 15-25mm, Width: 1-2m, Length:1-50m

It belong to the agricultural rubber products and widely used in farms.



Small Diamond Cow Rubber Mat

Thickness: 33mm, Width: 1.22m, Length:1.83m

It belong to the agricultural rubber products and widely used in farms.



Studded Mould stable Rubber Mat

Thickness: 17mm, Width: 1.22m, Length:1.83m

It belong to the agricultural rubber products and widely used in farms.



PCB(Pro Conveyor Belt) conveyor belts for all kind of applications – up to the strongest and heaviest belts ever built. Please contact us for any assistance regarding your conveyor belt requirements.

PCB (Pro Conveyor Belt) has the most modern testing centre worldwide for developing conveyor belts. Extensive quality tests ensure the technological lead of PCB conveyor belts.

PCB production locations meet the ISO 9001 quality standard. The certification according to ISO 9001 comprises quality assurance during development, production, assembly and distribution. It therefore completely covers all of the areas which lead to higher standards of products and services. PCB fabricates according to all the nationally relevant quality standards like DIN, SANS, MSHA, RMA, BS, AS, CSA, etc.

Pro Conveyor Belt Co., Ltd

Office Address: Shenzhen Road, Qingdao City, Shandong
Province, China

Factory Address: HUtouai Town, Laizhou city, Shandong
Province, China

Phone: 0086-532-80999210

E-mail: pcb@pro-cb.com

Web: <http://www.pro-cb.com>

The content of this brochure has been compiled to the best of our knowledge. All details are not binding, even with regard to possible third party industrial rights. We reserve ourselves the right to make technical modifications due to further developments, at any time. No liability is accepted for the recommendations and details given in this brochure. © Pro Conveyor Belt Co., Ltd
All rights reserved.

PCB
Pro Conveyor Belt